

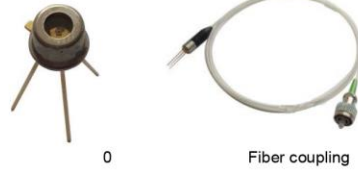
800-2600nm 0.5mm InGaAs PIN Photodiode

Version: 3.1 17-06-01

Model: LSIPD26-0.5

Features:

- Low noise, High reliability
- 800-2600nm wide wavelength range
- Active diameter 0.5mm
- Hermetic package TO46 Can or with receptacle or with fiber coupling



Applications:

- Gas Analyzer
- Environment measurement
- Optical sensor, Temperature sensing
- Covert IR sensing, Spectrography
- Medical and Chemical analysis
- Optical power meter, Space light detect equipment

Absolute maximum ratings:

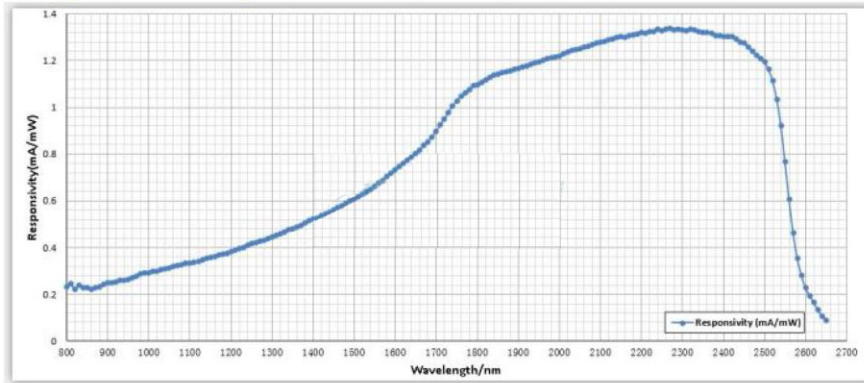
parameter	symbol	value	unit
Operating temperature	Top	-40~+85	℃
Storage temperature	Tstg	-50~+125	℃
Forward current	I _f	8	mA
Reverse voltage	V _R	0.4	V
Soldering temperature(time)	T _s (10s)	260	℃

Electrical and optical characteristics:(T=25℃)

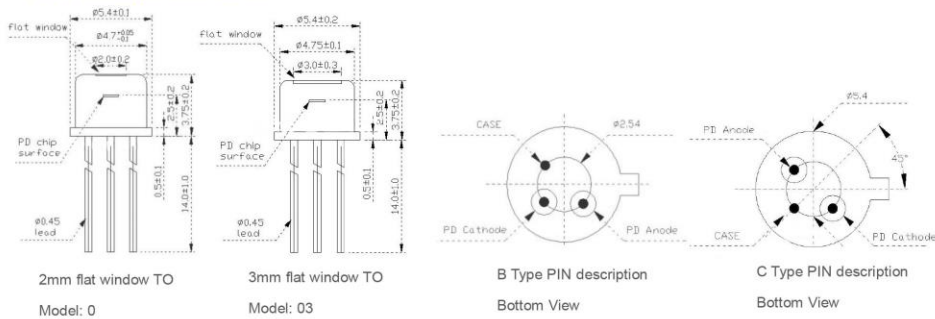
parameter	symbol	unit	Value (typ.)
Active diameter	Φ	mm	0.5
Spectral range	λ	nm	800-2600
Responsivity	Re (VR=0.2V,λ=850nm)	mA/mW	0.21
	Re (VR=0.2V,λ=1310nm)	mA/mW	0.45
	Re(VR=0.2V,λ=2300nm)	mA/mW	1.3
	Re(VR=0.2V,λ=2600nm)	mA/mW	0.23
Response time	Tr (RL=50Ω, VR=0.2V)	ns	13
Dark current	ID(VR=0V)	nA	60
	ID(VR=0.2V)	nA	400
Reverse Breakdown voltage	VBR (IR=10uA)	V	1.5
Junction capacitance	Cj (f=1MHz, VR=0V)	pF	100
	Cj (f=1MHz, VR=0.2V)	pF	90
Saturated Optical Power	Ps(VR =0.2V)	mW	6
Operating voltage	VR	V	0-0.2
Shunt impedance	Rsh (VR=10mV)	KΩ	70
package	Hermetic package TO46 Can or with receptacle or fiber coupling		

NOTICE: The above product specifications are subject to change without notice.

The typical Sensitivity curve



TO package and Lead



Note: In order to get other dimensions, please contact us.

Order information

LSIPD26-0.5-X-X	X=0	TO-46 Can with 2mm flat window cap
	X=03	TO-46 Can with 3mm flat window cap
	X=SMFA/P	TO-46 Can with SM Fiber coupling with FC-APC/FC-PC connector
	X=SMSA	TO-46 Can with SM Fiber coupling with SC-APC connector
	X=5MMFA/P	TO-46 Can with 50um MM Fiber coupling with FC-APC/FC-PC connector
	X=6MMFA/P	TO-46 Can with 62.5um MM Fiber coupling with FC-APC/FC-PC connector
	X=10MMFA/P	TO-46 Can with 105um MM Fiber coupling with FC-APC/FC-PC connector
	X=20MMFA/P	TO-46 Can with 200um MM Fiber coupling with FC-APC/FC-PC connector
	X=2JKFC	TO-46 Can with fixed receptacle with FC connector and 2 pieces of fix holes
	X=4JKFC	TO-46 Can with fixed receptacle with FC connector and 4 pieces of fix holes
	X=Other	By customer's request

B=B Type PIN description
C=C Type PIN description

The cautions

- 1: The above product specifications are subject to change without notice.
- 2: The suitable ESD protecting measures are recommend in storage, transporting and using.
- 3: The fiber bending radius no less than 20mm for avoiding fiber damaged ,Be sure the fiber coupling facet is clean before connecting it to opto-circuit.