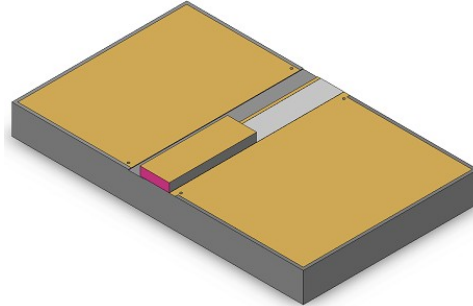


: 1940nm Fabry-Perot Laser Subassemblies

Rev A

Description

Thorlabs's high power Fabry-Perot Laser (FPL) diode is based on state of the art quantum-well epitaxial layer growth and a reliable ridge waveguide structure. P-down bonding enables high-power operation in the 1940 nm wavelength range.



Features

Applications

- ✓ Optical source for molecular spectroscopy → High optical output power
- ✓ Laser transmitter for remote chemical sensing and pollutant detection → Numerous packaging options

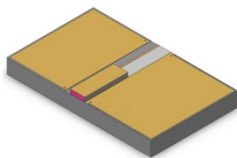
Specifications

T (Chip) = 25°C

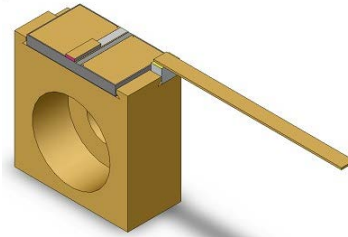
Parameter		Min	Typ	Max	
Operating Current	I_{OP}		400	500	mA
Center Wavelength	λ_C	1920	1940	1960	nm
Output Power (Front facet)	P_{OUT}	25	30		mW
Threshold Current	I_{TH}		55	80	mA
Forward Voltage	V_F		2.0	2.5	V
Spectral Bandwidth (RMS)	$\Delta\lambda$		15		nm

SPECIFICATIONS SUBJECTED TO CHANGE WITHOUT NOTICE

Subassembly Options



C - Chip on Submount

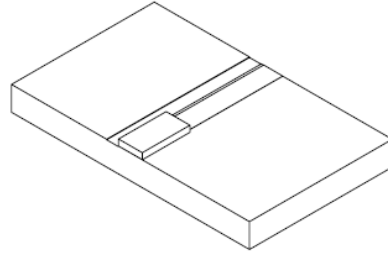
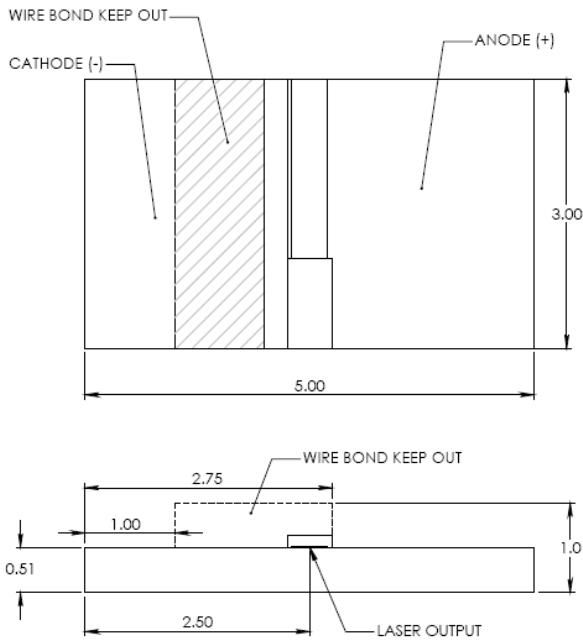


CM - Chip on C-Mount

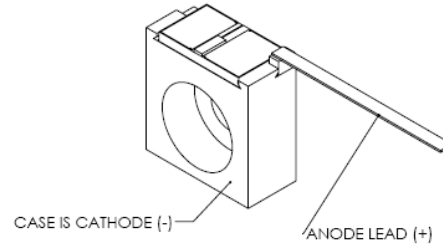
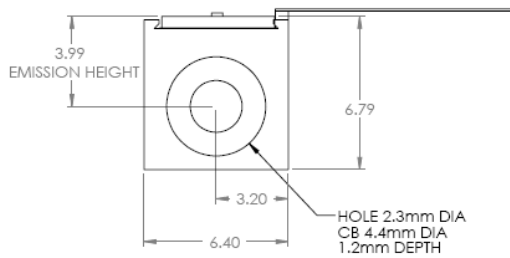
Ordering Information

FPL 1940 - XX	
XXX	
Submount	
C = Chip on Submount	
CM = Chip on C-Mount	

Subassembly Drawings



C - Chip on Submount Subassembly



CM- Chip on C-Mount Subassembly

-